

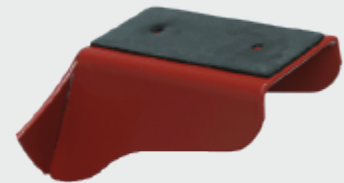
Snow DEFENDER® 4500

- For exposed fastener panels:
on 2x4 purlins in the flat position
(Not for use with standing seam roofing)

**Embossed groove
increases the rigidity by 40%**

- 16 gauge type 304 stainless steel
- EPDM rubber sealer
- Powder coated or mill finish
- No caulk needed
- Patented
- Made in USA

Part#	Description	Pcs/Bx	Lb/Bx
SD45	Snow Defender® 4500	50	15



EPDM rubber sealer

How many snow guards do you need?

We have a calculator just for you at

www.SnowDefenderCalculator.com

